

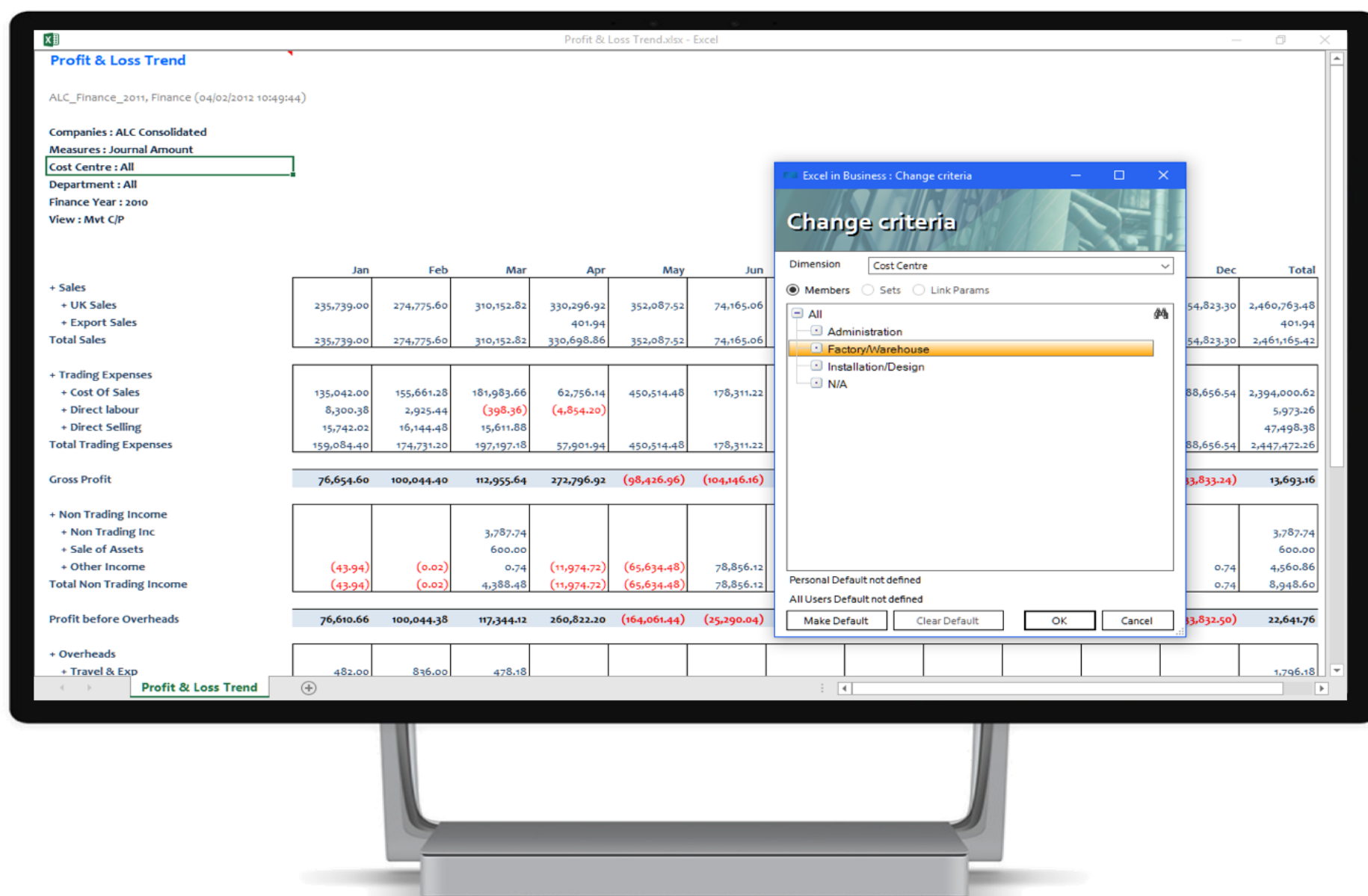
Think pressing a button and getting automated financial reports and analyses from Sage X3 is just a dream...

## We think it's just the starting point with **EiB Financial Analytics for Sage X3**

**EiB Financial Analytics for Sage X3** allows your management team to simply focus on period end Financial results and removes the burden of manually creating, collating and maintaining multiple spreadsheets.

In short it removes all risk and frees up to 4-6 days each month !

Working on any combination of Sage X3 either hosted on premise or in the cloud, EiB Financial Analytics automates reporting, ensures accuracy and offers the ability to audit your data back to underlying transactions in your accounting system.



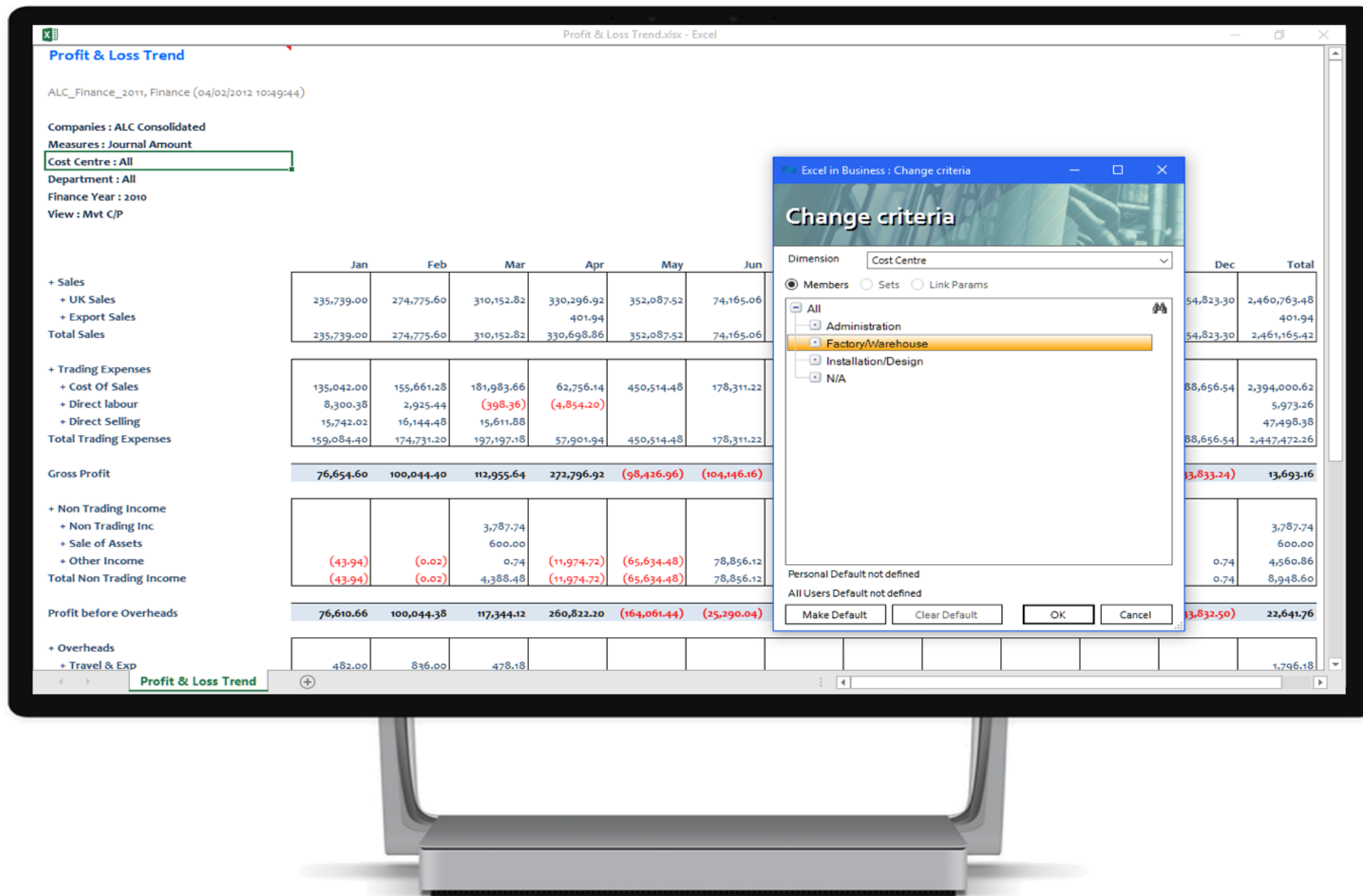
### KEY FEATURES

- Rapid implementation of Financial and Group Financial Consolidation applications.
- Low price entry and lowest total cost of ownership. Simple price per annum licensing.
- Unlimited user deployment free of charge.
- Excel based reports with exceptional print quality formatting.
- Modular implementation approach;
  - Financial Reporting
  - Transactional Reporting
  - Graphical Dashboards
  - Management Feedback
  - Report Distribution
  - Forecasting
- Full Multi Currency module.
- Extendable to all your non Sage applications and other MI data.
- On Premise, Cloud and Mobile solutions.

Produce board quality Profit & Loss and Balance Sheet reports any way you wish, easily add additional P&Ls e.g. Investor P&Ls, Statutory P&Ls and Divisional P&Ls with the EiB Financial Analytics Structure Designer, and add as required non-financial information such as Headcount and KPIs e.g. Profit per head, Cost per head etc., are just a few of the ways which EiB Financial Analytics can enhance your Sage 200 reporting.

Where a number on a report requires additional investigation, simply double click and you are taken to the underlying Sage transactions supporting it. Full auditing, full traceability, guaranteed accuracy.

## All without leaving Excel!



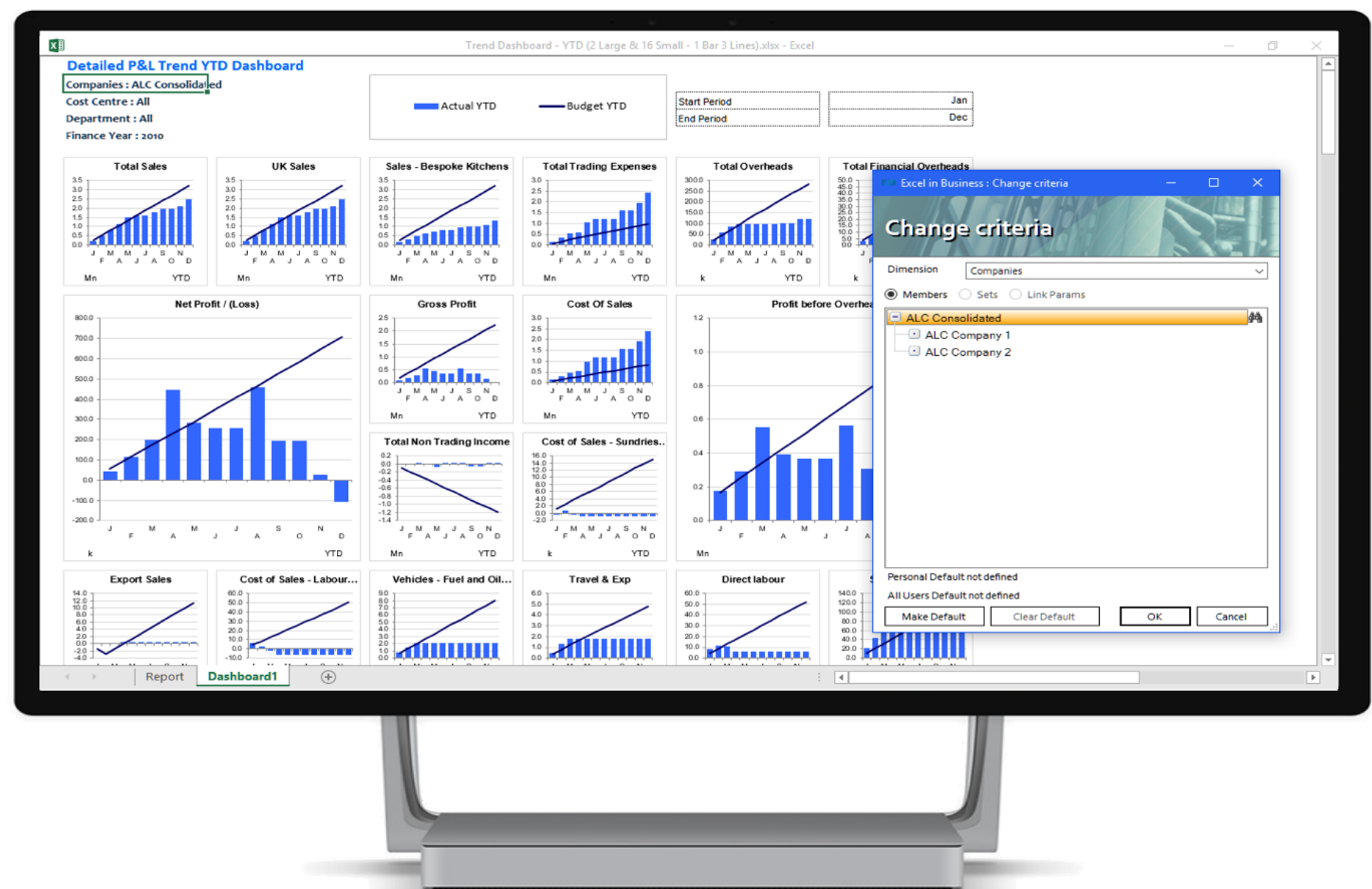
All financial reports can be dynamically changed and viewed by any combination of Company, Cost Centre and Department including up to 9 additional Analysis Fields along with multi-currency analysis as required.

All reports are completely interactive within Excel with drill-down and precise formatting working in complete harmony.

However, it's not just about automating numbers within reports...

Where professional charts and Dashboards are required to highlight over and under achieving areas of your business, EiB Financial Analytics provides an integrated chart gallery with over 20 examples based on the data visualisation guidelines advocated by industry visionaries like Stephen Few and Edward Tufte.

To complete the picture, we provide 10 of the most popular P&L and Balance Sheet reports "out of the box" to ensure early ROI and application adoption.



## So, what are you waiting for?

Contact [sales@excelinbusiness.com](mailto:sales@excelinbusiness.com) or visit [www.excelinbusiness.com](http://www.excelinbusiness.com) to download further collateral, arrange an online demonstration, or simply view one of our videos.

Online demonstrations will take about 1 hour and you don't even have to leave your office.



**EXCEL IN BUSINESS**

**PAUL MARTIN**  
Managing Director

+44(0)7768 876 525

[pmartin@excelinbusiness.com](mailto:pmartin@excelinbusiness.com)

<http://www.excelinbusiness.com/>

20-22 Wenlock Road  
London, N1 7GU  
United Kingdom