



Think pressing a button and getting automated financial reports and analyses from Sage 200 is just a dream...

We think it's just the starting point with **EiB Financial Analytics for Sage 200**

EiB Financial Analytics for Sage 200 allows your management team to simply focus on period end Financial results and removes the burden of manually creating, collating and maintaining multiple spreadsheets.

In short it removes all risk and frees up to 4-6 days each month!

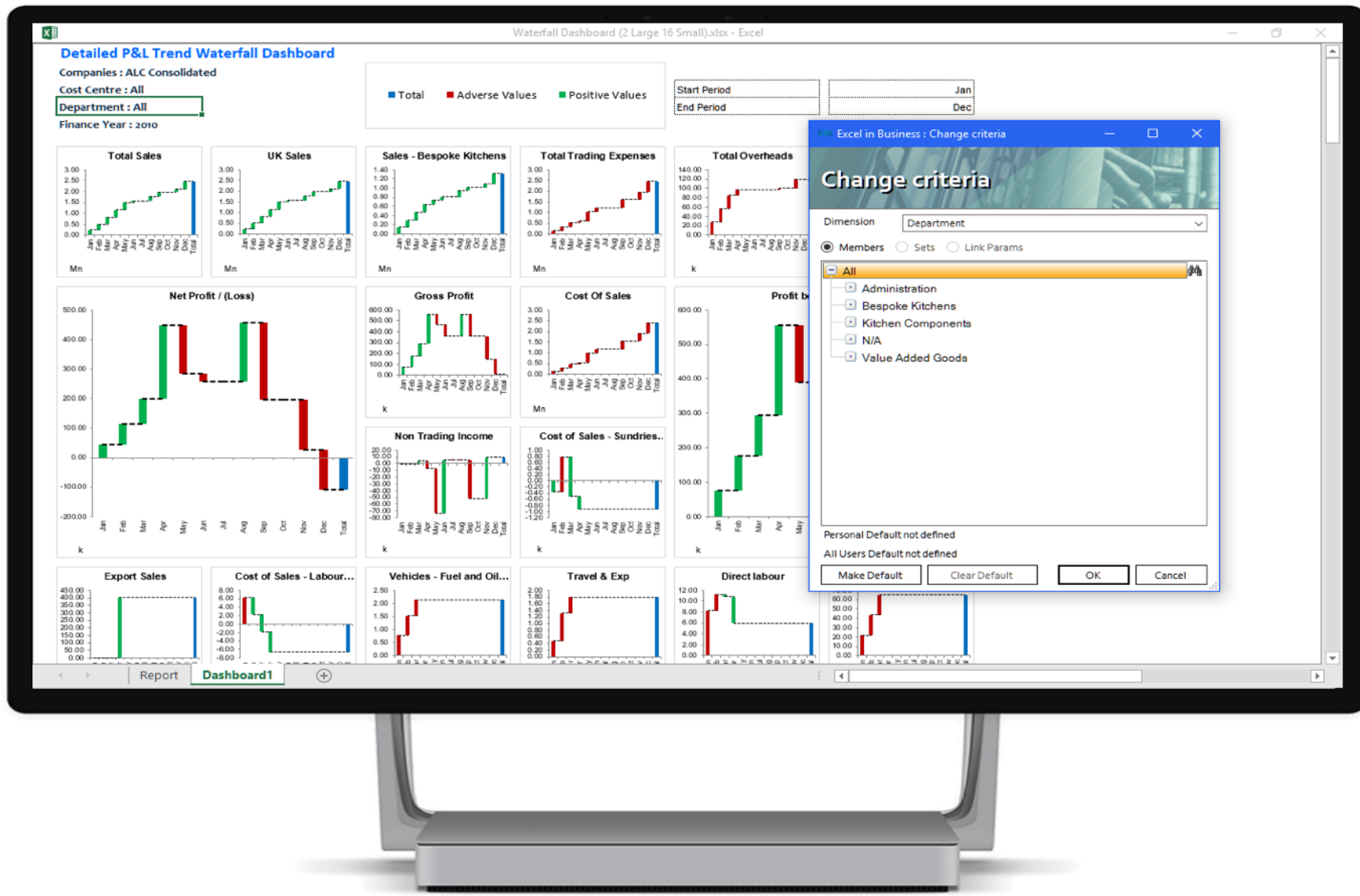
Whether your organisation is a single Sage 200 company, single currency operation or a highly complex multi company, multi-currency business, EiB Financial Analytics allows you to start small with proven ROI yet allows you to naturally grow as your requirements develop.

KEY FEATURES

- Rapid implementation of single company and multi company Sage 200 applications.
- Low price entry and low total cost of ownership. Simple pricing per module per annum.
- Unlimited user deployment free of charge
- Software support and software product upgrades included as standard.
- Intuitive end user experience
- Excel based reports with exceptional print quality formatting.
- Modular implementation approach:
 - Financial Reporting
 - Transactional Reporting
 - Power BI Graphical Dashboards
 - Management Feedback
 - Report Distribution
 - Budgeting & Forecasting
- Full Multi Currency Module
- Extendable to all your non Sage applications and other MI data
- On Premise, Cloud and Mobile solutions

View: Actual	Actual	Budget	Variance	Var %	Act YTD	Bud YTD	Var YTD	Var % YTD
Sales	74,165.06	268,083.32	(193,918.26)	(72.34%)	1,577,618.86	1,602,833.28	(25,214.42)	(1.59%)
UK Sales	74,165.06	266,666.66	(192,501.60)	(72.19%)	1,577,216.92	1,599,999.96	(22,783.04)	(1.42%)
Sales - Default	8,532.42		8,532.42		8,532.42		8,532.42	
Sales - Bespoke Kitchens	66,237.84	266,666.66	(200,428.82)	(75.16%)	804,754.16	1,599,999.96	(795,245.80)	(49.70%)
Sales - Kitchens Components					192,660.86		192,660.86	
Sales - Value Added	(605.20)		(605.20)		571,269.48		571,269.48	
Export Sales	1,416.66	(1,416.66)			401.94	2,833.32	(2,431.38)	(85.81%)
Total Sales	74,165.06	268,083.32	(193,918.26)	(72.34%)	1,577,618.86	1,602,833.28	(25,214.42)	(1.59%)
Trading Expenses	178,311.22	815,166.62	(636,855.40)	(72.11%)	1,217,740.42	489,099.72	(728,640.70)	(59.88%)
Cost Of Sales	178,311.22	68,833.32	(109,477.90)	(59.05%)	1,164,268.78	412,999.92	(751,268.86)	(65.48%)
Direct labour	4,333.32	4,333.32			5,973.26	25,999.92	20,026.66	77.03%
Direct Selling	8,349.98	8,349.98			47,498.38	50,999.88	2,601.50	5.19%
Total Trading Expenses	178,311.22	815,166.62	(636,855.40)	(72.11%)	1,217,740.42	489,099.72	(728,640.70)	(59.88%)
Gross Profit	(104,146.16)	(147,083.30)	(42,937.14)	(41.38%)	359,878.44	1,113,733.56	(753,855.12)	(67.29%)
Non Trading Income	78,856.12	(100,000.00)	(178,856.12)	(178.86%)	5,591.44	(598,750.00)	(604,341.44)	(108.07%)
Non Trading Inc					3,787.74	1,250.00	2,537.74	203.02%
Sale of Assets					600.00		600.00	
Other Income	78,856.12	(100,000.00)	(178,856.12)	(178.86%)	1,203.70	(600,000.00)	(601,203.70)	(50.00%)
Total Non Trading Income	78,856.12	(100,000.00)	(178,856.12)	(178.86%)	5,591.44	(598,750.00)	(604,341.44)	(108.07%)

Produce board quality Profit & Loss and Balance Sheet reports any way you wish, easily add additional P&Ls e.g. Investor P&Ls, Statutory P&Ls and Divisional P&Ls with the EiB Financial Analytics Structure Designer, and add as required non-financial information such as Headcount and KPIs e.g. Profit per head, Cost per head etc., are just a few of the ways which EiB Financial Analytics can enhance your Sage 200 reporting.



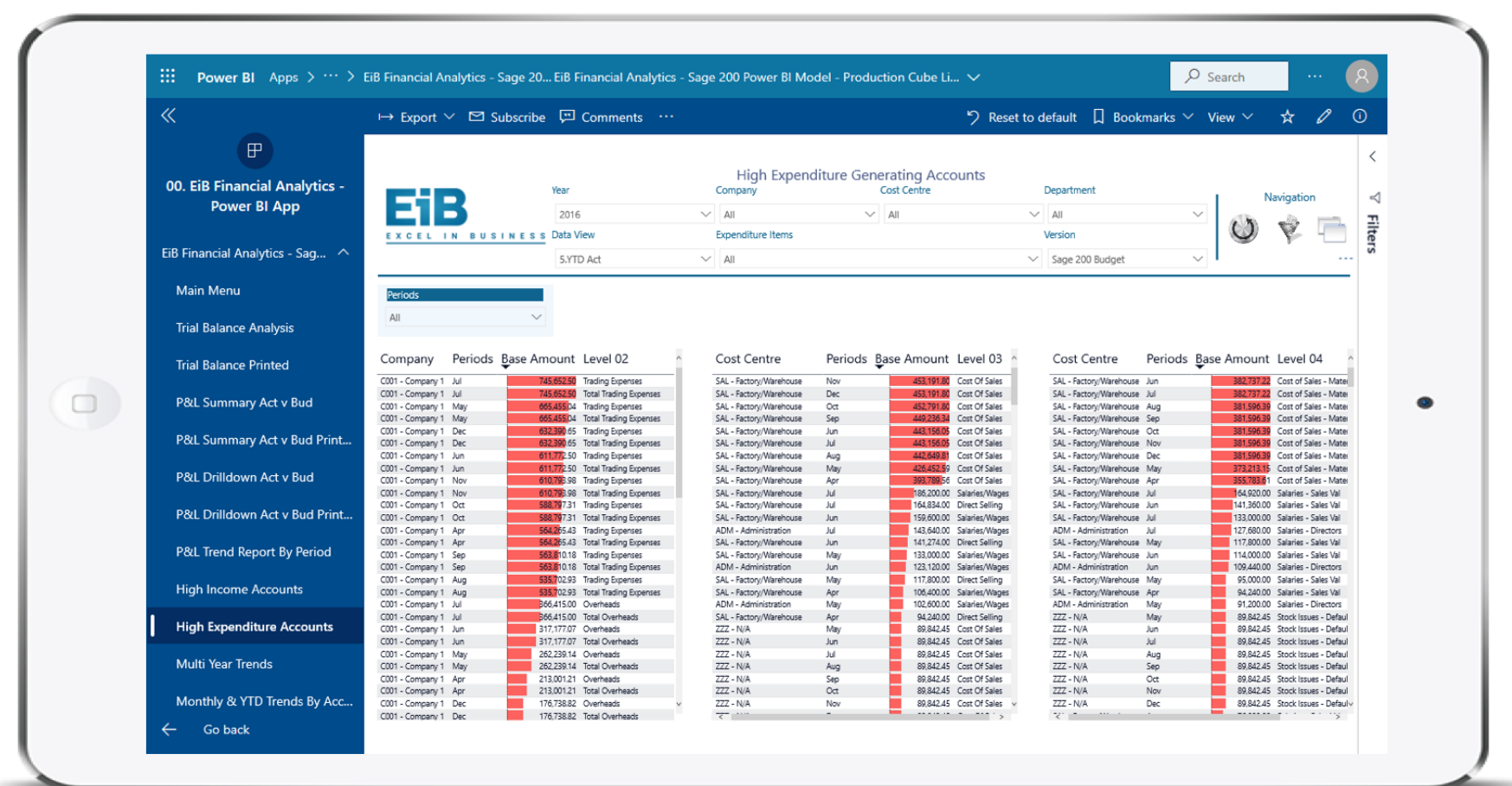
Where a number on a report requires additional investigation, simply double click and you are taken to the underlying Sage transactions supporting it. Full auditing, full traceability, guaranteed accuracy. **All without leaving Excel!**

All financial reports can be dynamically changed and viewed by any combination of Company, Cost Centre and Department including up to 9 additional Analysis Fields along with multi-currency analysis as required.

All reports are completely interactive within Excel with drill-down and precise formatting working in complete harmony. However, it's not just about automating numbers within reports.

Where professional charts and Dashboards are required to highlight over and under achieving areas of your business, EiB Financial Analytics provides an integrated chart gallery with over 20 examples based on the data visualization guidelines advocated by industry visionaries like Stephen Few and Edward Tufte.

To complete the picture, we provide 10 of the most popular P&L and Balance Sheet reports "out of the box" to ensure early ROI and application adoption.



So, what are you waiting for?

Contact sales@excelinbusiness.com or visit www.excelinbusiness.com to download further collateral, arrange an online demonstration, or simply view one of our videos.

Online demonstrations will take about 1 hour and you don't even have to leave your office.



EXCEL IN BUSINESS

PAUL MARTIN
Managing Director

+44(0)7768 876 525

pmartin@excelinbusiness.com

<http://www.excelinbusiness.com/>

20-22 Wenlock Road
London, N1 7GU
United Kingdom