

Think delivering scalable, multi user, self-service, data marts without leaving Excel is just a pipe dream?

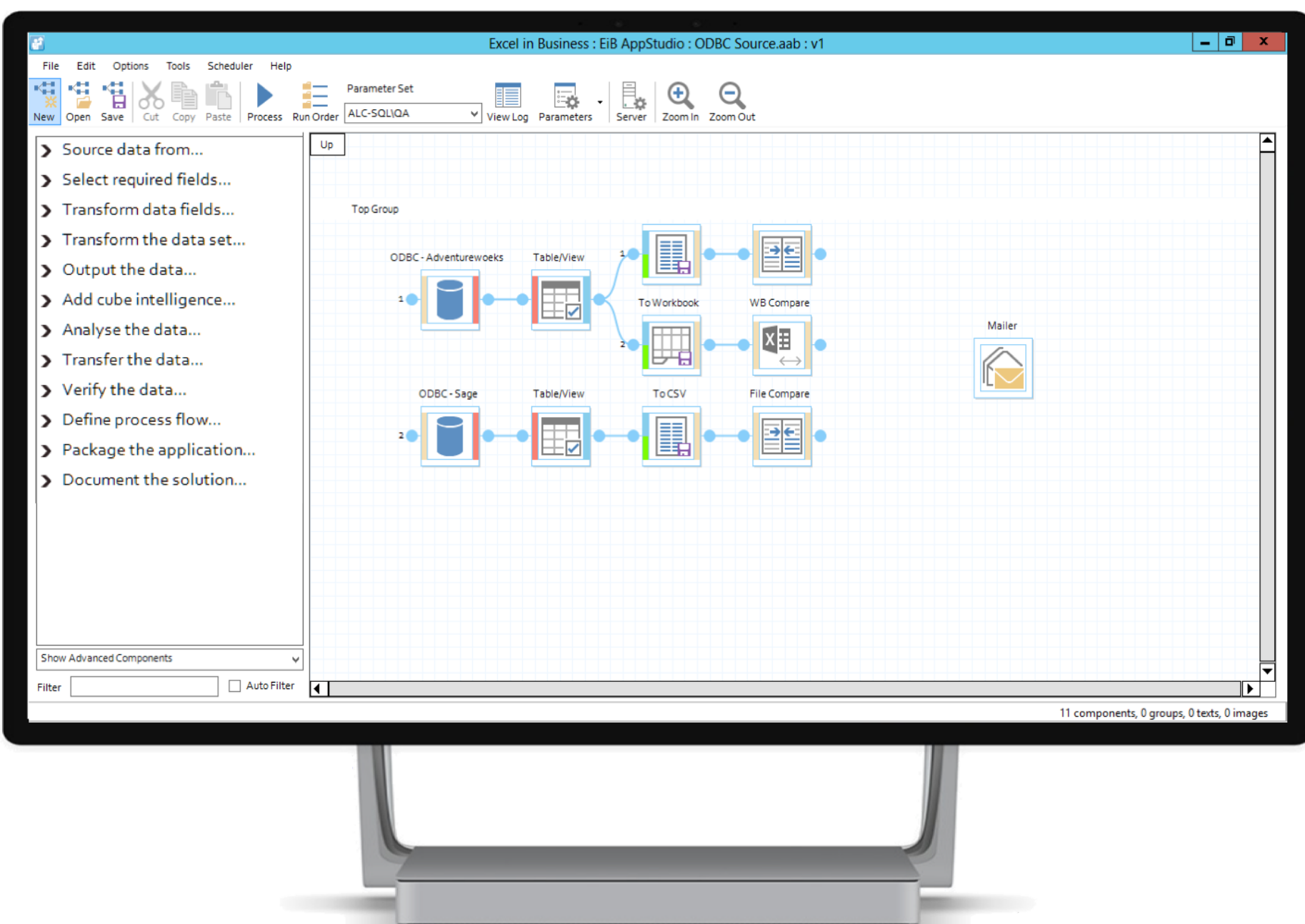
We think it's just the starting point with **EiB AppStudio**

EiB AppStudio provides Excel power users, IT departments and consultants with the imagination and capability to deliver powerful, robust datamart applications without being complete analytics domain experts.

For whatever the business area or reporting requirement - sales, commercial, operations, CRM or HR, just drop your data in and go!

Want to analyse monthly sales data by product and customer from your Microsoft SQL Server or Oracle based ERP system? Drop it into EiB AppStudio.

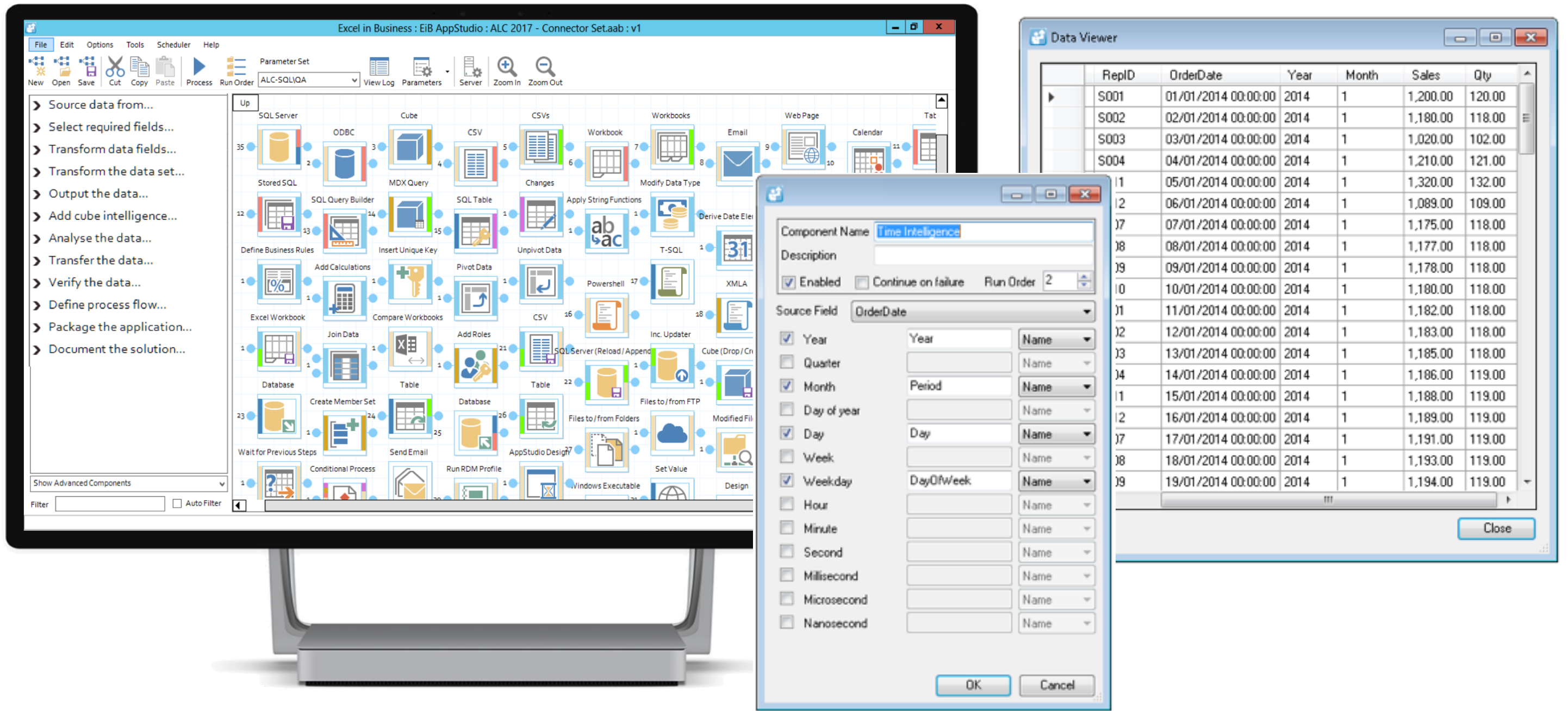
Then, want to add, combine and contrast, forecast information stored in multiple Excel workbooks?



KEY FEATURES

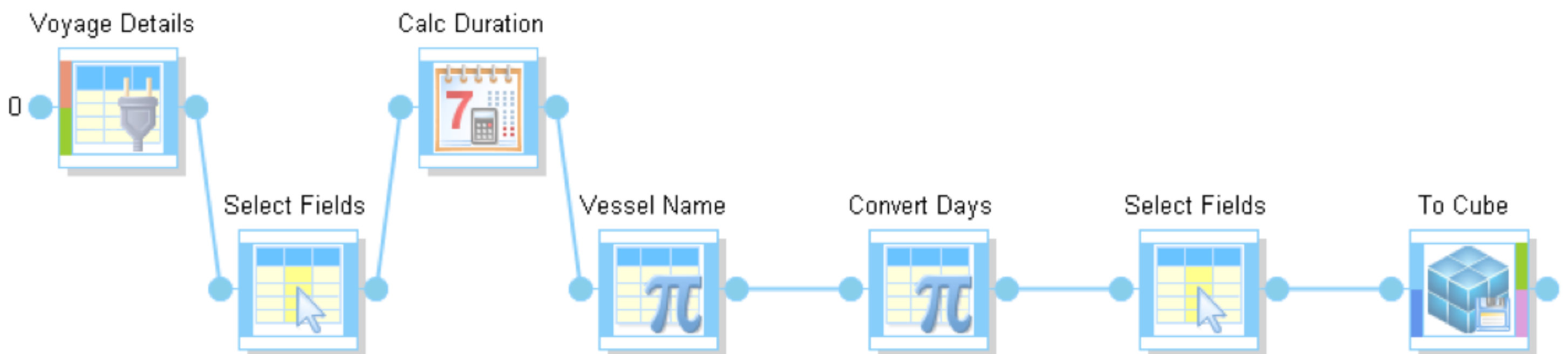
- Analytical data-marts delivered in record timescales.
- Data sourced from multiple databases / systems;
 - SQL / Oracle Databases
 - Excel workbooks
 - MS OLAP Cubes
 - ODBC Sources & Web Feeds
 - OEM Objects e.g DLLs
- In-built time intelligence objects;
 - Load base data daily
 - Pre-load into weeks, months, quarters, years in a few clicks.
- Merge and aggregate disparate data sources using simple visual objects without the need to code!
- Output your apps to create analytical databases of your choice;
 - Azure DB & Tabular
 - MS Cubes MD & Tabular
 - MS SQL Table(s)
 - Excel workbook(s)
- Use EiB AppStudio to create packaged vertical apps that can easily be moved from server to server, or customer to customer.
- Self-document your apps using inbuilt EiB AppStudio objects.
- Uses EiB Launch MI methodology to implement applications faster with greater quality and consistency

Fully documented, simple Apps can be built in as little as 5 objects. However, for the more serious Analyst or BI practitioner, Apps can be created from a palette of over 80+ visual objects. This allows complex transformations and manipulation of one or more data sources to be performed with ease, precision and consistency.



One of the real-world challenges for any App is information diversity. When you are loading data from multiple databases, web data feeds and / or spreadsheets, how do you ensure they are being processed correctly each step of the way into your Apps?

With EiB AppStudio, you can instantly view the data at any stage, so you can spot any mistakes in your visual processes and take corrective action immediately. This significantly reduces App development effort, cost and eliminates dependency on IT resources.



In addition, if your base data is stored daily, how do you easily aggregate this to Months, Quarters, Years to facilitate time series reporting within your App? With EiB AppStudio, a time intelligence visual object and a few clicks, is all it takes. You can then easily drill down your prebuilt hierarchy of Years -> Quarters -> Months -> Days. When you are done loading the data, output the results to a robust Microsoft DataMart or SQL data warehouse.

So, what are you waiting for?

Contact sales@excelinbusiness.com or visit www.excelinbusiness.com to download further collateral, arrange an online demonstration, or simply view one of our videos.

Online demonstrations will take about 1 hour and you don't even have to leave your office.



EXCEL IN BUSINESS

PAUL MARTIN
Managing Director

☎ +44(0)7768 876 525

✉ pmartin@excelinbusiness.com

🌐 <http://www.excelinbusiness.com/>

📍 20-22 Wenlock Road
London, N1 7GU
United Kingdom